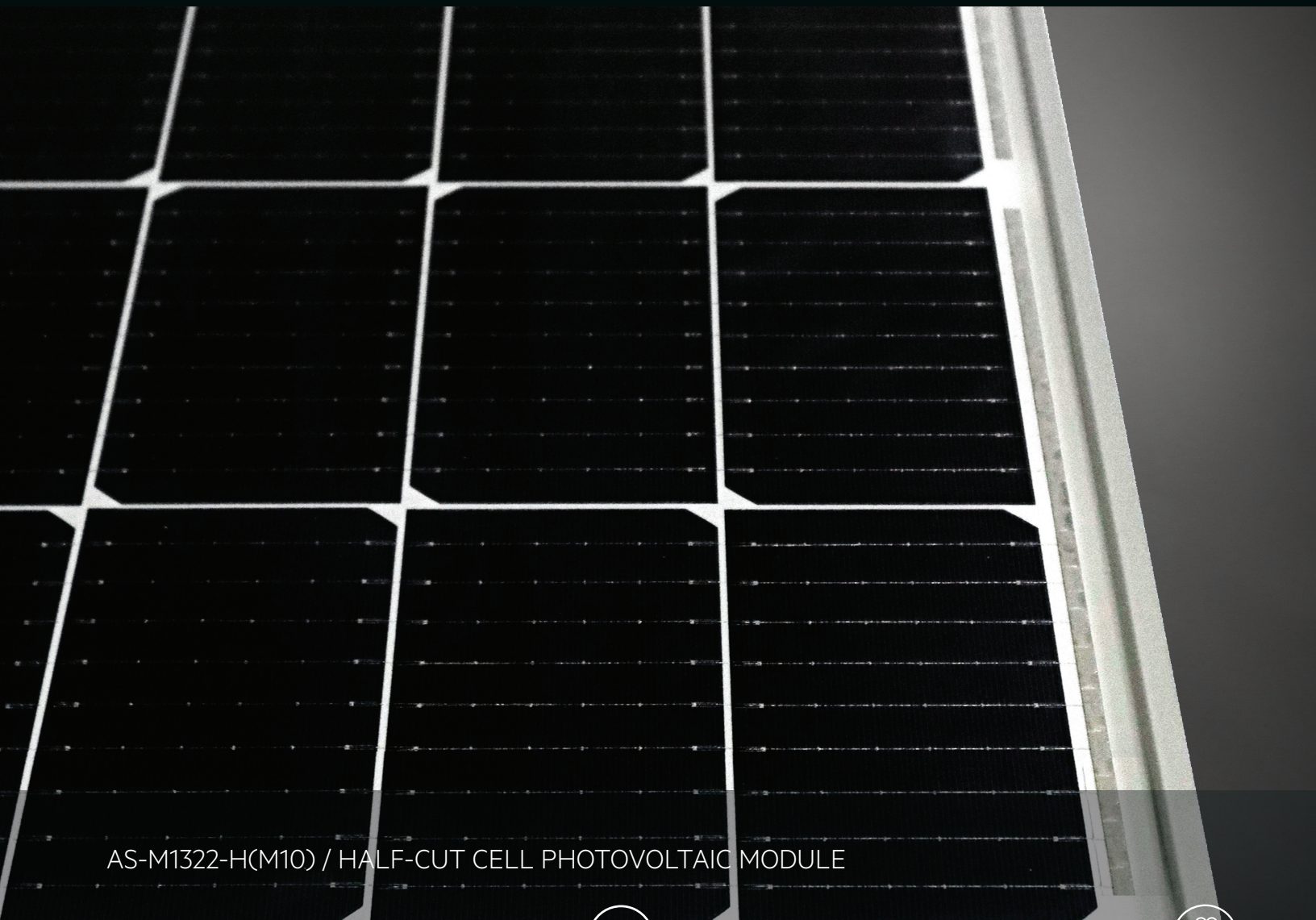




AEG HIGH EFFICIENCY SERIES



AS-M1322-H(M10) / HALF-CUT CELL PHOTOVOLTAIC MODULE

Characteristics



Power range: 500-510 Wp
Half-Cut cell technology, p-type cells
Suitable for: residential / commercial installations

Extra peace of mind



Extensive certifications and rigorous Quality Control
25 years product warranty
25 years performance warranty

Product Name Code (PNC)



AS-M1322-H(M10)-500/505/510 (silver frame)
AS-M1322Z-H(M10)-500/505/510 (black frame)

Advantages



Optimized design for more energy output
Maximized efficiency thanks to M10 cells
Extra long cables for greater installation flexibility

AS-M1322-H(M10) / HALF-CUT CELL PHOTOVOLTAIC MODULE

PRODUCT SERIES & NAMECODE (PNC)

AEG HIGH EFFICIENCY SERIES			
AS-M1322-H(M10)-500/505/510, silver frame, white backsheet			
AS-M1322Z-H(M10)-500/505/510, black frame, white backside			

ELECTRICAL CHARACTERISTICS AT STC^{1,2}

Nominal Power (Pmax)	[Wp]	500	505	510
Power Sorting ³	[W]	0-5	0-5	0-5
Maximum Power Voltage (Vmp)	[V]	37.84	38.01	38.18
Maximum Power Current (Imp)	[A]	13.22	13.29	13.36
Open Circuit Voltage (Voc)	[V]	45.60	45.73	45.87
Short Circuit Current (Isc)	[A]	14.07	14.14	14.21
Module Efficiency (ηm)	[%]	21.06	21.27	21.48
Maximum System Voltage	[V]	1000	1000	1000
Series Fuse Maximum Rating	[A]	25	25	25

ELECTRICAL CHARACTERISTICS AT NOCT⁴

Maximum Power (Pmax)	[W]	379	383	387
Maximum Power Voltage (Vmp)	[V]	36.17	36.34	36.50
Maximum Power Current (Imp)	[A]	10.48	10.54	10.59
Open Circuit Voltage (Voc)	[V]	43.31	43.44	43.57
Short Circuit Current (Isc)	[A]	11.29	11.34	11.40

MECHANICAL CHARACTERISTICS

Solar cells	monocrystalline [pcs]	132
	Dimensions [mm]	M10 Half-cut [182 x 91]
Front glass	high-transparency	
	Thickness [mm] / [in]	3.2 / 0.126
Backsheet	White	
Encapsulant	EVA	
Frame	Anodized aluminum alloy	Silver or black
Junction box	Split-type, IP68	
	Bypass diodes	3
UV-resistant cables	Length [mm] / [in]	1300 / 51.18
	Section [mm ²]	4
Connectors	MC4 Original	
Dimensions	H x L x W [mm]	2094 x 1134 x 35
	H x L x W [in]	82.44 x 44.65 x 1.38
Weight	[kg] / [lbs]	26 / 57.32
Maximum load	Wind / Snow [Pa]	2400 / 5400
Fire Class	Class C	

PACKAGING

Packing configuration	[pcs/pallet]	31
Loading capacity	[pcs/40 ft container]	682

NOTES

- Standard Test Conditions (STC): Irradiance 1000 W/m², Air Mass AM = 1.5, Cell Temperature 25°C
 - Measurement tolerances (IEC 61215:2016): Pmax±3%, Voc±3%, Isc±4%
 - AEG photovoltaic modules are classified according to a principle of positive power tolerance: the Power Output measured at STC of the delivered modules exceeds their assigned Nameplate Nominal Power
 - NOCT: Nominal operating cell temperature, Irradiance 800 W/m², Wind Speed 1m/s; Ambient Temperature 20°C, Air Mass AM=1.5
 - Full text of the Warranty Terms available at: <https://www.solarsolutions.ag/warranty/aeg/>. The Extended Warranty is a separate offer. If not offered by your distributor, the standard warranty conditions apply.
 - (HE/GB) No less than 99% of the minimum "Peak Power at STC" in the first year; power output decline no more than 0.4% per year thereafter, ending with 87.4%.
- Dimensions in the technical picture are expressed in mm with tolerance ±2 mm (±0.079 ") / Version 2023.10.01.EN © Solar Solutions Group. Specifications in this datasheet are subject to change without notice.
- AEG is a registered trademark used under license from AB Electrolux (publ).

CERTIFICATIONS

System	ISO 9001, ISO 14001, ISO 45001
Product	IEC 61215-1:2016, IEC 61215-1:2016, IEC 61215-2:2016, IEC 61730-1/2:2016, EN 61215-1:2016, EN 61215-1:2016, EN 61215-1:2016, EN IEC 61730-1/2:2018, EN IEC 61730-1/2:2018/AC:2018-06

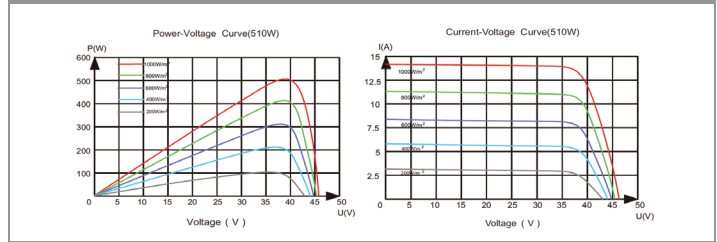
WARRANTIES

Product warranty ⁵	[years]	25
Performance warranty (linear) ⁶	[years]	25

TEMPERATURE CHARACTERISTICS

NOCT	[°C]	42 (±3)
Pmax Temp. Coefficient (γ)	[%/°C]	-0.330
Voc Temp. Coefficient (β)	[%/°C]	-0.246
Isc Temp. Coefficient (α)	[%/°C]	0.0448
Operating temperature	[°C]	-40~+85

I/V CURVES - IRRADIANCES



TECHNICAL DRAWINGS

