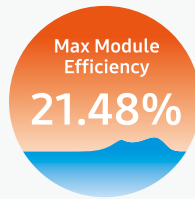
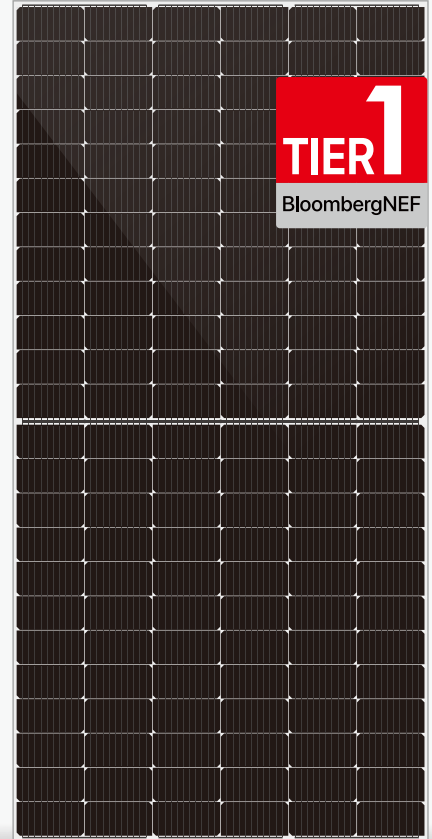


DHM-72X10

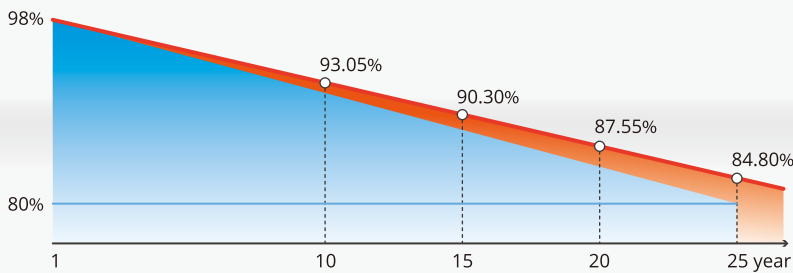
# 540~555W

Half-Cell High Efficiency PV Module



## Quality Guarantee

**12-Year** material & technology warranty  
**25-Year** linear power output warranty



DAH Solar linear power output guarantee  
Standard linear power output guarantee



### More Power Generation

Larger size of light receiving area and higher module conversion efficiency



### 10 Busbar Technology

Higher power collection density improves power generation



### Stable Generation Performance

Guaranteed 0~+5W positive tolerance and slower power attenuation:  
first year ≤2%, 0.55% per year from 2-25



### Higher Power Gains and Lower Losses

Excellent low irradiance performance and low shadow loss



### Process Optimized and Upgraded

Lower risk of hot spot and stronger anti-PID ability



### Strong Environmental Adaptability and Great Durability

Certified by Dust-Sand, Salt-Mist, Ammonia etc. weather resistance tests and enhanced mechanical load: wind load (2400 Pa) and snow load (5400 Pa)

## Comprehensive Products and System Certificates



IEC 61215 / IEC 61730 / CE / FIDE / INMETRO

ISO 45001-

2018/International standards for occupational health & safety

ISO 14001-

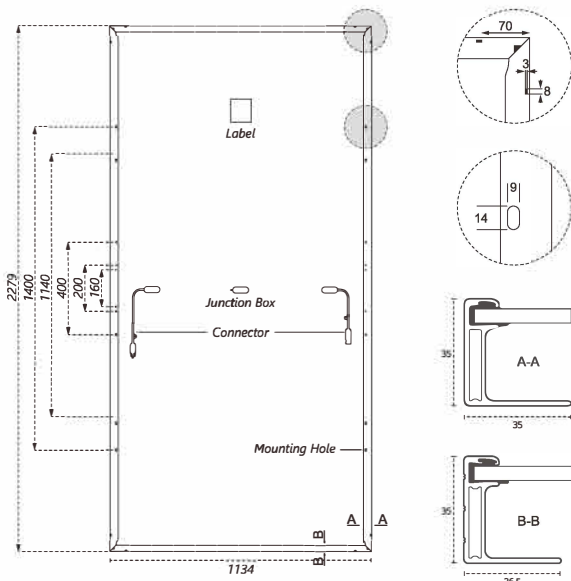
2015/Standards for environmental management system

ISO 9001-

2015/Quality management system

# DHM-72X10-540~555W

## Design



## Mechanical Specification

Cells Type  
**Mono 182×91mm**

Weight  
**29kg**

Output Cable  
(Including connector)  
No. of Cells  
Glass  
Junction box  
Connector

Dimension (L×W×T)  
**2279×1134×35mm**

Packing  
**31pcs/pallet, 620pcs/40HQ**

4.0mm<sup>2</sup>, 350/250mm in length,  
length can be customized  
144 (6×24)  
3.2mm High Transmission, Antireflection Coating  
IP68, 3 Bypass Diodes  
MC4 Compatible

## Operating Parameters

Maximum system voltage	1500V DC
Operating Temperature	-40 ~ +85°C
Maximum series fuse rating	25A
Snow load, frontside	5400Pa
Wind load, backside	2400Pa
Nominal operating cell temperature	45°C±2°C
Application level	Class A

## STC-Electrical Characteristics

Module Type	DHM-72X10			
Maximum Power (Pmax/W)	540	545	550	555
Open-circuit Voltage (Voc/V)	49.8	50.0	50.2	50.4
Maximum Power Voltage (Vmp/V)	42.0	42.2	42.4	42.6
Short-circuit Current (Isc/A)	13.66	13.72	13.78	13.84
Maximum Power Current (Imp/A)	12.86	12.91	12.97	13.03
Module Efficiency (%)	20.89	21.09	21.30	21.48
Temperature Coefficient of Isc			0.05%/°C	
Temperature Coefficient of Voc			-0.31%/°C	
Temperature Coefficient of Pmax			-0.35%/°C	

Standard Test Environment : Irradiance 1000W/m<sup>2</sup>, Cell temperature 25°C, Spectrum AM1.5

## NOCT-Electrical Characteristics

Maximum Power (Pmax/W)	402	405	409	413
Open-circuit Voltage (Voc/V)	46.7	46.9	47.1	47.3
Maximum Power Voltage (Vmp/V)	39.4	39.6	39.8	40.0
Short-circuit Current (Isc/A)	11.04	11.09	11.13	11.18
Maximum Power Current (Imp/A)	10.20	10.24	10.29	10.33

Standard Test Environment : Irradiance 800W/m<sup>2</sup>, Ambient temperature 20°C, Spectrum AM1.5, Wind speed 1m/s

## I-V Curve DHM-72X10-550W

