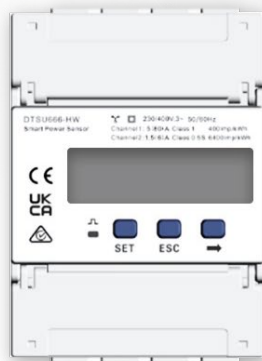


SMART POWER SENSOR

Model: SmartPS-80AI-T0

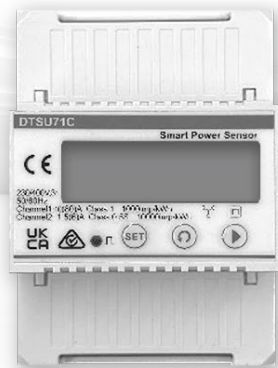
DTSU666-HW



YDS60-80



DTSU71C



DHSU1079-ZT



Accurate
Class I Measurement
Accuracy



Simple & Easy
LCD Display, Easy to Set
and Check



Energy Efficient
Overall Power
Consumption ≤ 1.5 W

SmartPS-80AI-T0 Technical Specifications

Technical Specification	SmartPS-80AI-T0			
	DTSU666-HW	YDS60-80	DTSU71C	DHSU1079-ZT
General Specification				
Dimensions (H x W x D)	101mm x 72mm x 80mm	100mm x 72mm x 80mm	101mm×72mm×80mm	100mm x 72mm x 80mm
Mounting type	DIN35 Rail			
Weight (including cables)	0.29kg	0.285kg	0.247kg	0.40kg
Power Supply				
Power grid type	3P3W/3P4W			
Input voltage (phase voltage)	230 V AC/400 V AC			
Power consumption	<1.5W			
Measurement Range				
Line voltage	90V–1000V			
Phase voltage	176VAC–288VAC			
Current	0–80A			
Measurement Accuracy				
Current/Voltage	±0.5%			
Power/Energy	±1%			
Frequency	±0.01 Hz			
Communication				
Interface	RS485			
Baud rate	4800/9600(Default)/19200/115200			
Communication protocol	Modbus-RTU			
Environment				
Operating temperature range	–25°C to +60°C	–25°C to +60°C	–25°C to +60°C	–25°C to +60°C
Storage temperature range	–40°C to +85°C	–40°C to +85°C	–35°C to +70°C	–40°C to +85°C
Operating humidity	5% RH–95% RH (non-condensing)			
Others				
Accessories	RS485 Cable (10 m / 33 ft.)			

Disclaimer: The preceding values are measured by an internal laboratory of Huawei in a specific environment. The actual values may vary with products, software versions, usage conditions, and environmental factors.